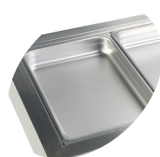


CW5/V

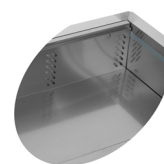
Cooling Well GN1/1

Product features

- Stainless steel
- Electronic thermostat
- Accepts GN1/1 pans (Not supplied)
- Ventilated cooling



Designed for GN1/1 pans, not supplied



Ventilated cooling

Design and Material	
Number of dividers	pcs
Exterior Finish	SS304
Interior Finish	SS304

Measures and Content		
Capacity GN Pans	pcs	5
Temperature Range	°C	+2 to +8
Climate Class		4
Gross / Net Weight	kg	64 / 50
Gross / Net Volume	l	266 / 159

Cooling and Functions		
Type of Controller	Electronic	
Type of Cooling	Ventilated	
Type of Defrost	Automatic	
Refrigerant	R600a	
Refrigerant Charge	g	135
Thermometer	Yes	
GWP		3

Power and Consumption		
Energy Consumption	kWh/24h	456
Energy Consumption	kWh/h	0,19
Annual Energy Consumption	kWh/year	1664
Input Power	W	235
Voltage / Frequency	V/Hz	220-240/50
Noise Level	db(A)	42

Dimensions		
Build In Dimension (WxD)	mm	1765 x 665
Internal Dimension (WxDxH)	mm	1678 x 508 x 186
External Dimension (WxDxH)	mm	1790 x 688 x 636
Packed Dimension (WxDxH)	mm	1678 x 760 x 742
40ft Container Load	pcs	57