

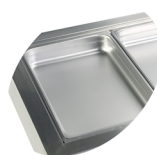
CW4

Cooling Well GN1/1

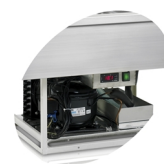


Product features

- Stainless steel
- Accepts GN1/1 pans (Not supplied)
- Static cooling
- Electronic thermostat



Designed for GN1/1 pans, not supplied



Automatic evaporation of defrost water

Design and Material		
Number of dividers	pcs	5
Exterior Finish		SS304
Interior Finish		SS304

Measures and Content		
Capacity GN Pans	pcs	4
Temperature Range	°C	+2 to +8
Climate Class		4
Gross / Net Weight	kg	80 / 47
Gross / Net Volume	l	139 / 136

Cooling and Functions		
Type of Controller		Electronic
Type of Cooling		Static
Type of Defrost		Automatic
Refrigerant		R600a
Refrigerant Charge	g	135
Thermometer		Yes
GWP		3

Power and Consumption		
Energy Consumption	kWh/24h	288
Energy Consumption	kWh/h	0,12
Annual Energy Consumption	kWh/year	1051
Input Power	W	250
Voltage / Frequency	V/Hz	220-240/50
Noise Level	db(A)	42

Dimensions		
Build In Dimension (WxD)	mm	1405 x 650
Internal Dimension (WxDxH)	mm	1326 x 570 x 175
External Dimension (WxDxH)	mm	1436 x 678 x 536
Packed Dimension (WxDxH)	mm	1490 x 730 x 680
40ft Container Load	pcs	69