

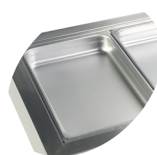
CW5

Cooling Well GN1/1

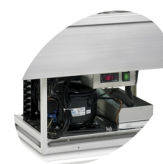


Product features

- Stainless steel
- Accepts GN1/1 pans (Not supplied)
- Static cooling
- Electronic thermostat



Designed for GN1/1 pans, not supplied



Automatic evaporation of defrost water

Design and Material		
Number of dividers	pcs	6
Exterior Finish		SS304
Interior Finish		SS304

Measures and Content		
Capacity GN Pans	pcs	5
Temperature Range	°C	+2 to +8
Climate Class		4
Gross / Net Weight	kg	91 / 86
Gross / Net Volume	l	170 / 166

Cooling and Functions		
Type of Controller		Electronic
Type of Cooling		Static
Type of Defrost		Automatic
Refrigerant		R600a
Refrigerant Charge	g	135
Thermometer		Yes

Power and Consumption		
Energy Consumption	kWh/24h	2,88
Energy Consumption	kWh/h	0,12
Annual Energy Consumption	kWh/year	1051
Input Power	W	250
Voltage / Frequency	V/Hz	220-240/50
Noise Level	db(A)	42

Dimensions		
Build In Dimension (WxD)	mm	1740 x 650
Internal Dimension (WxDxH)	mm	1662 x 570 x 175
External Dimension (WxDxH)	mm	1770 x 678 x 536
Packed Dimension (WxDxH)	mm	1810 x 730 x 680
40ft Container Load	pcs	57